

User's Manual Update: Building the Frame

The circular frame of the JumpPOD comprises 8 curved top tubes. There are 2 different types of Top Tube: Key No. 2 (detailed below) and Key No. 1 (detailed overleaf).

The Top Tubes must be assembled in the correct order, as detailed below:

14ft JumpPOD Deluxe

Top Tube (Key No. 2) and Enclosure 'A' Socket (Key No. 4)

Large 'A' Socket



Slim square end



Please use the following information to identify the correct parts. The curved Top Tube (Key No. 2) above has two square ends. One square is slimmer than the other. Please make sure that you have the **slimmer** square end on the **right**. This is essential for the assembly.

The wider square end should be on the left. Push the Large 'A' Socket (4) on to the wide square end.

Important!

Make sure the small screw hole on the Large 'A' Socket is positioned on the outside of the curve, as shown.



Important!

Make sure that the spring hole in the square end of Top Tube (Key No. 2) aligns with the opening in the Large 'A' Socket (Key No. 4).



Repeat this with the 3 remaining Key No. 2 and 4.

14ft JumpPOD Deluxe

Top Tube (Key No. 1) with 'B' Socket (Key No. 3)

Small 'B' Socket

Square end



The curved top tube above will have the Small 'B' Socket already attached, as shown above.

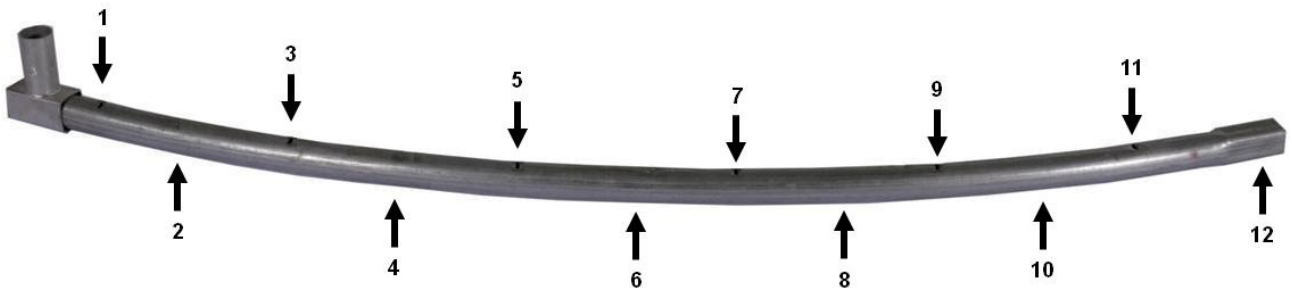
Detached 'B' Sockets?

If the 'B' Socket has come off, please assemble Key No. 2 and Key No. 4 **first**, as shown on the previous page.

Then position Top Tube (Key No. 1) as shown above. Please pay close attention to the spring hole locations.

There will be 6 spring holes on each side of the Top Tube (Key No. 1), giving **12** in total.

Counting from **left to right**, please make sure the **12th** spring hole is face down in the square end, on the **right** hand side of Top Tube (Key No. 1), as shown below.



Once Top Tube (Key No. 1) is in this position, push the Small 'B' Socket onto the square end on the **left**, as shown above.

Please ensure that the left hand square end is pushed **all the way through** the Small 'B' Socket, so it is flush with the edge of the Small 'B' Socket.

Repeat this with the 3 remaining Key No. 1 and 3.

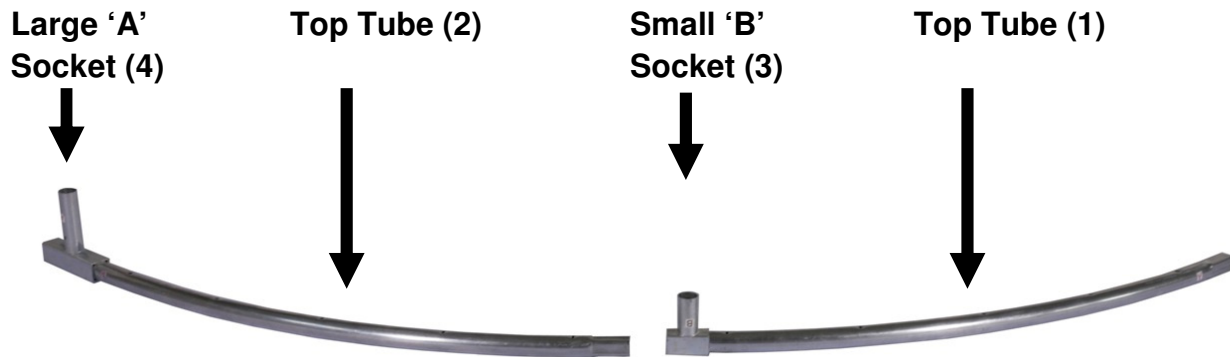
Note: For the rest of the guide, Key No.'s will be detailed in brackets after the part description, for example 'Top Tube (1)'.

The easiest way to put the trampoline together is in 4 individual quadrants.

For the first of these 4 quadrants, please lay out the Top Tubes (2) and (1) as shown below.

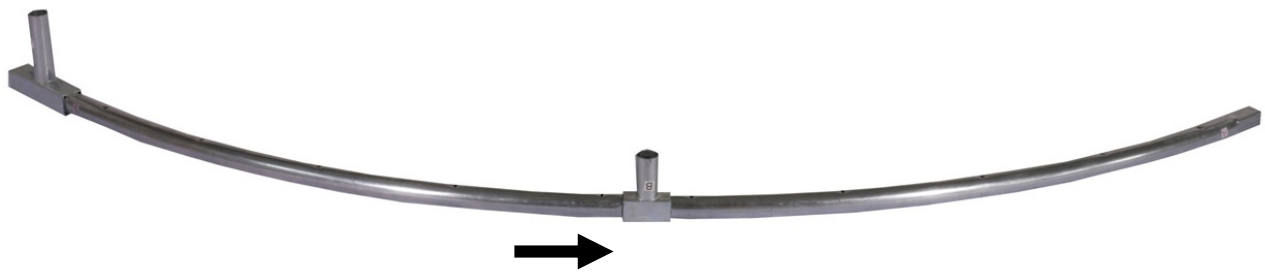
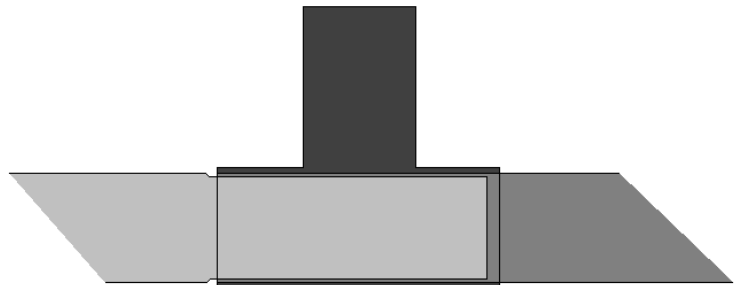
Make sure the 'A' and 'B' Sockets are securely attached, as shown in the previous steps.

In this position, both Top Tubes (2) and (1) will have 5 spring holes visible.



Insert the small end of one Top Tube (2) into the T-connector on the other Top Tube (1) to join the tubes, as shown below.

This will create a male and female connection **inside** the Small 'B' Socket (3), as shown on the right.



Now take 1 x Leg Extension 'A' (6) and insert it into the Large 'A' Socket (4) of the left hand Top Tube (2).



Take the Centre Leg (7) and insert this into the Leg Extension 'A' (6), as shown.



Then take a Leg Extension 'B' (5), and attach it to the **Centre Leg** (7) as shown.



Now grasp the free end of Leg Extension 'B' (5) and pull until it lines up with the open Small 'B' Socket (3).

By placing your hands further down the Leg Extension 'B' (5), you can increase your leverage.



You can also place your feet on the top rails either side of the Small 'B' Socket (3) to steady the assembly, as shown in the image.

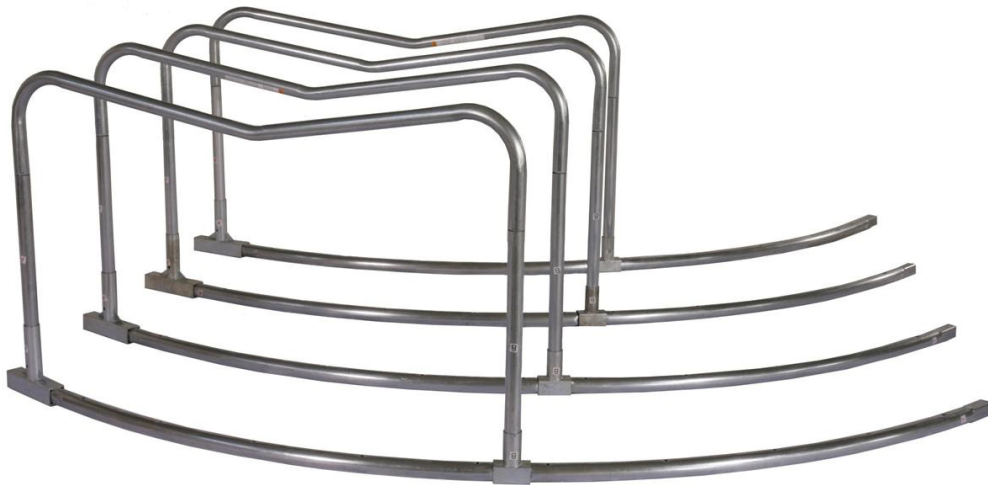
Pull the Leg Extension 'B' (5) into the open Small 'B' Socket (3). Once you have inserted the Leg Extension 'B' (5), push down firmly on the Centre Leg (7) to ensure a tight fit.



You have now completed 1 x quadrant, as shown.



Repeat these steps to assemble 3 more quadrants, giving 4 in total.



This next step will require at least 2 people. Make sure you are wearing gloves.
Turn the 4 x quadrants over and join 2 sections to together as shown.



The spring holes in the end of the Top Tubes will line up with the openings in the top face of the Large 'A' Socket (4). If this does not happen please check the layout of your Top Tubes, as shown in the first steps.



Push the end of Top Tube (2) into the open end of Large 'A' Socket (4)



Then add a third quadrant, as shown.



Now add the fourth quadrant to form the circular shape.

This will require extra effort. The easiest method is for 2 people to face each other.

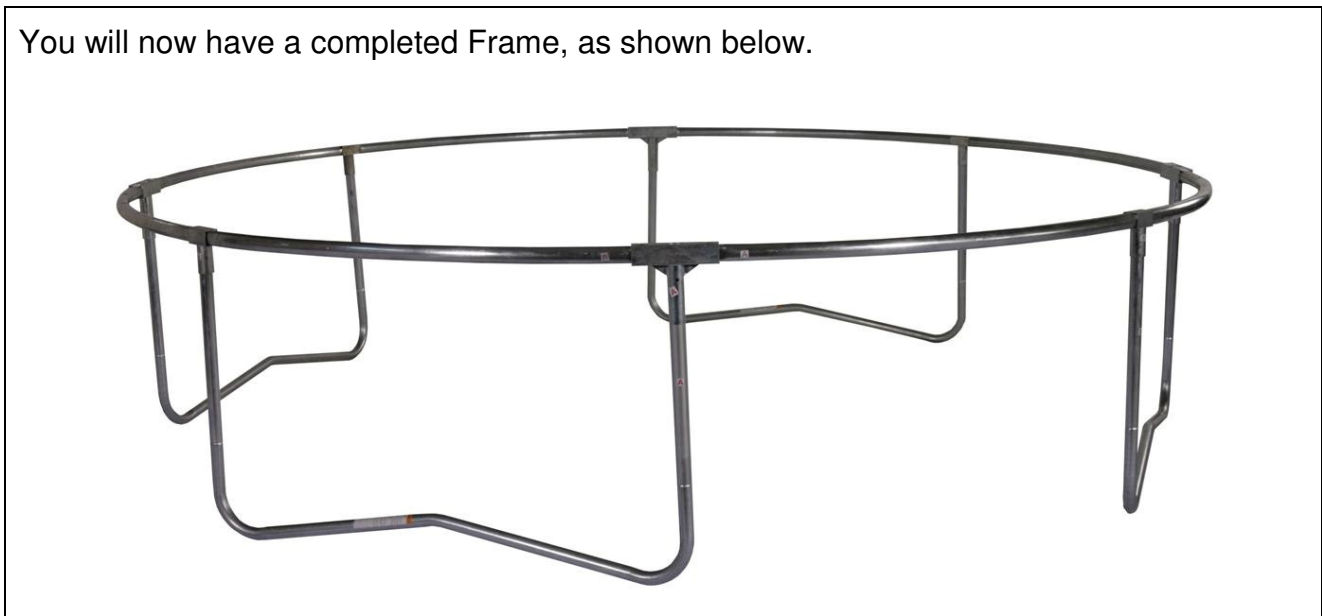
Then hold the Top Tubes either side of the sockets and both push towards the centre of the trampoline.

As the 2 people push towards each other, 1 person can join the final part of the circle.

Make sure you wear gloves.



You will now have a completed Frame, as shown below.



Please refer to the user's manual for the remainder of the assembly.